

EMERGENCY MANAGEMENT PLAN

FOR

**BRAZOS COUNTY, TEXAS A&M
UNIVERSITY AND THE CITIES OF
BRYAN, COLLEGE STATION, KURTEN
AND WIXON VALLEY**

AUGUST 2024

APPROVAL & IMPLEMENTATION

The Brazos County Interjurisdictional Emergency Management Plan

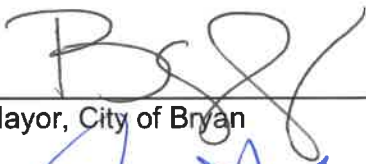
This emergency management plan is hereby approved. This plan is effective immediately and supersedes all previous editions.



County Judge, Brazos County

8/6/24

Date



Mayor, City of Bryan

9/6/24

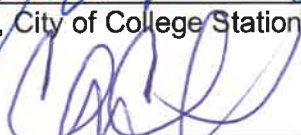
Date



Mayor, City of College Station

7/24/24

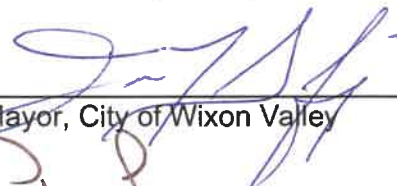
Date



Mayor, City of Kurten

9/10/24

Date



Mayor, City of Wixon Valley

9/6/24

Date



Chief Operating Officer, Texas A&M University

7-30-24

Date

RECORD OF CHANGES

Basic Plan

Change #	Date of Change	Change Entered By	Date Entered

TABLE OF CONTENTS

BASIC PLAN

I. AUTHORITY	1
A. Federal.....	1
B. State.....	1
C. Local	2
II. PURPOSE	2
III. EXPLANATION OF TERMS.....	3
A. Acronyms	3
B. Definitions	3
IV. SITUATION AND ASSUMPTIONS.....	6
A. Situation	6
B. Assumptions.....	7
V. CONCEPT OF OPERATIONS.....	7
A. Objectives	7
B. General	8
C. Operational Guidance	9
D. Incident Command System (ICS)	10
E. ICS - EOC Interface	11
F. State, Federal & Other Assistance.....	12
G. Emergency Authorities	13
H. Actions by Phases of Emergency Management	14
VI. ORGANIZATION AND ASSIGNMENT OF RESPONSIBILITIES	15
A. Organization.....	15
B. Assignment of Responsibilities	15
VII. DIRECTION AND CONTROL.....	27
A. General	27
B. Emergency Facilities	27
C. Line of Succession	28
VIII. READINESS LEVELS.....	29
IX. ADMINISTRATION AND SUPPORT	32
A. Agreements and Contracts.....	32
B. Reports	32
C. Records.....	32
D. Training	33
E. Consumer Protection.....	34
F. Post-Incident and Exercise Review	34
X. PLAN DEVELOPMENT AND MAINTENANCE	34
A. Plan Development.....	34

B. Distribution of Planning Documents.....	34
C. Review	34
D. Update	35

ATTACHMENTS

ATTACHMENT 1: Distribution List.....	1-1
ATTACHMENT 2: References.....	2-1
ATTACHMENT 3: Organization for Emergency Management.....	3-1
ATTACHMENT 4: Emergency Management Functional Responsibilities	4-1
ATTACHMENT 5: Annex Assignments.....	5-1
ATTACHMENT 6: Summary of Agreements & Contracts	6-1
ATTACHMENT 7: National Incident Management System Summary	7-1

ANNEXES (distributed under separate cover)

Annex A – Warning.....	A-1
Annex B – Communications.....	B-1
Annex C – Shelter & Mass Care	C-1
Annex D – Radiological Protection.....	D-1
Annex E – Evacuation.....	E-1
Annex F – Firefighting.....	F-1
Annex G – Law Enforcement	G-1
Annex H – Health & Medical Services.....	H-1
Annex I – Public Information	I-1
Annex J – Recovery.....	J-1
Annex K – Public Works & Engineering	K-1
Annex L – Utilities	L-1
Annex M – Resource Management.....	M-1
Annex N – Direction & Control	N-1
Annex O – Human Services.....	O-1
Annex P – Hazard Mitigation.....	P-1
Annex Q – Hazardous Materials & Oil Spill Response	Q-1
Annex R – Search & Rescue	R-1
Annex S – Transportation	S-1
Annex T – Donations Management.....	T-1
Annex U – Legal	U-1
Annex V – Terrorist Incident Response.....	V-1

BASIC PLAN

I. AUTHORITY

A. Federal

1. U. S. Constitution, as amended
2. Robert T. Stafford Disaster Relief & Emergency Assistance Act, (as amended), 42 U.S.C. 5121
3. 42 S. Code- 5170 (2013, January 29) Procedure for Declaration
4. Price- Anderson Amendments Act of 1988, Public Law 100-408, as amended
5. Post-Katrina Emergency Management Reform Act (PKEMRA), 2006
6. Housing and Economic Recovery Act of 2008
7. Sandy Recovery Improvement Act (SRIA) of 2013
8. Disaster Recovery Reform Act of 2018
9. 42 United States Chapter 68 Disaster Relief Sub Chapter IV. Major Disaster Assistance Programs Section Code 5170 (2023, January 3, 2022). Procedure for Declaration
10. The National Security Strategy, October 2022
11. Emergency Alert System, Code of Federal Regulations (CFR) 47, Chapter 1, Subchapter A, Part 11
12. Emergency Management and Assistance, Code of Federal Regulations, (CFR) 44
13. Emergency Planning and Community Right-to-Know Act Section 301
14. Emergency Management and Assistance Compact, Public Law 104-321
15. Executive Orders of the President
 - Homeland Security Presidential Directive, *HSPD-3*: Homeland Security Advisory System
 - Homeland Security Presidential Directive. *HSPD-5*: Management of Domestic Incidents
 - Homeland Security Presidential Directive, *HSPD-7*: Critical Infrastructure Identification, Prioritization, and Protection, December 2003
 - Homeland Security Presidential Directive, *HSPD-8*: National Preparedness, March 2011
 - Executive Order 13347, Federal Register, Individuals with Disabilities in Emergency Preparedness
 - National Incident Management System
 - National Response Plan
 - National Strategy for Homeland Security, July 2002
 - Nuclear/Radiological Incident Annex of the National Response Plan
 - Presidential Policy Directive 8: National Preparedness

B. State

1. Constitution of the State of Texas
2. Respective state agency, department, and commission-enabling legislation
3. Texas Education Code 88
4. State of Texas Emergency Management Basic Plan
5. Texas Government Code
 - 411.301-307 Power Outage Alert

- 418 Emergency Management
 - 421 Homeland Security
 - 433 State of Emergency
 - 791.006 Liability in the Fire Protection Contract or Provision of Law Enforcement Services
 - 791.025 Contracts for Purchases
 - 791.027 Emergency Assistance
6. Texas Health & Safety Code 773 Emergency Medical Services
 7. Texas Health & Safety Code 778 Emergency Management Assistance Compact
 8. Texas Local Government Code
 - 616 Emergency Interim Public Office Succession Act
 - 391 Regional Planning Commissions
 - Texas Water Code 13 Water Rates and Services
 - Subtitle C, 16 Provisions Generally Applicable to Water Development
 9. Executive Orders of the Government
 - GA 05 Relating to Emergency Management of Natural and Human- Caused Events, Emergencies and Disasters (2018)
 - RP 16 Relating to the Creation of the Statewide Amber Alert Network (2002)
 - RP 40 Relating to the Designation of the National Incident Management System as the Incident Management System for the State of Texas (2005)
 - RP 68 Relating to the Creation of the Blue Alert Program (2008)
 - RP 69 Relating to the Creation of the Governor's Commission for Disaster Recovery and Renewal (2008)
 10. Texas Homeland Security Strategic Plan 2021-2025
 11. Texas State Historical Association (2022). Texas Almanac. (E. Alvarez, Ed) Dallas: Texas State Historical Commission

C. Local

1. College Station City Ordinance # 3180 dated May 18, 2009.
2. Bryan City Ordinance # 621 dated August 11, 1986.
3. Wixon Valley City Ordinance # 108 dated August 7, 1987.
4. Kurten City Ordinance #11, dated March 27, 2003
5. Brazos County Commissioner's Court Order dated October 8, 1984.
6. Interjurisdictional Joint Resolution # 9-25-97-6-b among the County of Brazos and the Cities of College Station, Bryan, Kurten and Wixon Valley dated August 15, 1997; and September 16, 2003.
7. Inter-local Agreements & Contracts. See the summary in Attachment 6.

II. PURPOSE

This Basic Plan outlines our approach to emergency operations and is applicable to the county, cities, and Texas A&M University. It provides general guidance for emergency management activities and an overview of our methods of prevention, protection, mitigation, response, and recovery. The plan describes our emergency response organization and assigns responsibilities for various emergency tasks. This plan is intended to provide a framework for more specific functional annexes that describe in more detail who does what, when, and how. This plan applies to all local officials, departments, and agencies. The primary audience for the document includes our chief elected official(s), other elected officials and university administrators, the

emergency management staff, department and agency heads and their senior staff members, leaders of local volunteer organizations that support emergency operations, and others who may participate in our prevention, protection, mitigation, response, and recovery efforts.

III. EXPLANATION OF TERMS

A. Acronyms

AAR	After Action Report
ARC	American Red Cross
CFR	Code of Federal Regulations
DDC	Disaster District Committee
DHS	Department of Homeland Security
EMC	Emergency Management Coordinator
EOC	Emergency Operations or Operating Center
FBI	Federal Bureau of Investigation
FEMA	Federal Emergency Management Agency, an element of the U.S. Department of Homeland Security
Hazmat	Hazardous Material
HSPD-5	Homeland Security Presidential Directive 5
ICP	Incident Command Post
ICS	Incident Command System
IP	Improvement Plan
JFO	Joint Field Office
JIC	Joint Information Center
JIS	Joint Information System
NIMS	National Incident Management System
NRF	National Response Framework
OSHA	Occupational Safety & Health Administration
PIO	Public Information Officer
SOGs	Standard Operating Guidelines
SOPs	Standard Operating Procedures
SOC	State Operations Center
TSA	The Salvation Army
VOADs	Volunteer Organizations Active in Disasters

B. Definitions

1. Area Command (Unified Area Command). An organization established (1) to oversee the management of multiple incidents that are each being managed by an ICS organization or (2) to oversee the management of large or multiple incidents to which several Incident Management Teams have been assigned. Sets overall strategy and priorities, allocates critical resources according to priorities, ensures that incidents are properly managed, and ensures that objectives are met, and strategies followed. Area Command becomes Unified Area Command when incidents are multijurisdictional.
2. Disaster District. Per Texas Government Code § 418.113, the state is divided into 24 disaster districts to engage in homeland security preparedness and response activities. The boundaries of the disaster districts must coincide with the geographic boundaries of

the state planning regions established by the governor under Local Government Code § 391.

3. Disaster District Committee. Established for each disaster district and is composed of local representatives of the state agencies, boards, and commissions and organized volunteer groups with representation on the Texas Emergency Management Council. Each disaster district committee must coordinate with political subdivisions within the disaster district to ensure that state and federal emergency assets are made available as needed to provide the most efficient and effective response possible.
4. Emergency Operations Center. Specially equipped facilities from which government officials exercise direction and control and coordinate necessary resources in an emergency situation.
5. Public Information. Information that is disseminated to the public via the news media before, during, and/or after an emergency or disaster ensuring the needs of the whole community are addressed.
6. Emergency Situations. As used in this plan, this term is intended to describe a *range* of occurrences, from a minor incident to a catastrophic disaster. It includes the following:
 - a. Incident. An incident is a situation that is limited in scope and potential effects. Characteristics of an incident include:
 - 1) Involves a limited area and/or limited population.
 - 2) Evacuation or in-place sheltering is typically limited to the immediate area of the incident.
 - 3) Warning and public instructions are provided in the immediate area, not community wide.
 - 4) One or two local response agencies or departments acting under an Incident Commander normally handle incidents. Requests for resource support are normally handled through agency and/or departmental channels.
 - 5) May require limited external assistance from other local response agencies or contractors.
 - 6) For the purposes of the NRF, incidents include the full range of occurrences that require an emergency response to protect life or property.
 - b. Emergency. An emergency is a situation that is larger in scope and more severe in terms of actual or potential effects than an incident. Characteristics include:
 - 1) Involves a large area, significant population, or important facilities.
 - 2) May require implementation of large-scale evacuation or in-place sheltering and implementation of temporary shelter and mass care operations.
 - 3) May require community-wide warning and public instructions.
 - 4) Requires a sizable multi-agency response operating under an Incident Commander.
 - 5) May require some external assistance from other local response agencies, contractors, and limited assistance from state or federal agencies.
 - 6) The EOC will be activated to provide general guidance and direction, coordinate external support, and provide resource support for the incident.

- 7) For the purposes of the NRF, an emergency (as defined by the Stafford Act) is “any occasion or instance for which, in the determination of the President, Federal assistance is needed to supplement State and local efforts and capabilities to save lives and to protect property and public health and safety, or to lessen or avert the threat of catastrophe in any part of the United States.”
- c. Disaster. A disaster involves the occurrence or threat of significant casualties and/or widespread property damage that is beyond the capability of the local government to handle its organic resources. Characteristics include:
 - 1) Involves a large area, a sizable population, and/or important facilities.
 - 2) May require implementation of large-scale evacuation or in-place sheltering and implementation of temporary shelter and mass care operations.
 - 3) Requires community-wide warning and public instructions.
 - 4) Requires a response by all local response agencies operating under one or more incident commanders.
 - 5) Requires significant external assistance from other local response agencies, contractors, and extensive state or federal assistance.
 - 6) The EOC will be activated to provide general guidance and direction, provide emergency information to the public, coordinate state and federal support, and coordinate resource support for emergency operations.
 - 7) For the purposes of the NRF, a *major disaster* (as defined by the Stafford Act) is any catastrophe, regardless of the cause, which in the determination of the President causes damage of sufficient severity and magnitude to warrant major disaster federal assistance.
- d. Catastrophic Incident. For the purposes of the NRF, this term is used to describe any natural or manmade occurrence that results in extraordinary levels of mass casualties, property damage, or disruptions that severely affect the population, infrastructure, environment, economy, national morale, and/or government functions. An occurrence of this magnitude would result in sustained national impacts over prolonged periods of time and would immediately overwhelm local and state capabilities. All catastrophic incidents are *Incidents of National Significance*.
7. Hazard Analysis. A document published separately from this plan identifies the local hazards that have caused or possess the potential to adversely affect public health and safety, public or private property, or the environment.
8. Hazardous Material (Hazmat). A substance in a quantity or form posing an unreasonable risk to health, safety, and/or property when manufactured, stored, or transported. The substance, by its nature, containment, and reactivity, has the capability for inflicting harm during an accidental occurrence. A substance that is toxic, corrosive, flammable, reactive, an irritant, or a strong sensitizer, and poses a threat to health and the environment when improperly managed (Includes toxic substances, certain infectious agents, radiological materials, and other related materials such as oil, used oil, petroleum products, and industrial solid waste substances).
9. Incident of National Significance. An actual or potential high-impact event that requires a coordinated and effective response by and appropriate combination of federal, state, local, tribal, nongovernmental, and/or private sector entities to save lives and minimize

damage and provide the basis for long-term communication recovery and mitigation activities.

10. Inter-local agreements. Arrangements between governments and/or organizations, either public or private, for reciprocal aid and assistance during emergency situations where the resources of a single jurisdiction or organization are insufficient or inappropriate for the tasks that must be performed to control the situation. Commonly referred to as mutual aid agreements.
11. Stafford Act. The Robert T. Stafford Disaster Relief and Emergency Assistance Act authorizes federal agencies to undertake special measures designed to assist the efforts of states in expediting the rendering of aid, assistance, emergency services, and reconstruction and rehabilitation of areas devastated by disaster.
12. Standard Operating Guidelines. Approved methods for accomplishing a task or set of tasks. SOGs are typically prepared at the department or agency level.

IV. SITUATION AND ASSUMPTIONS

A. Situation

Brazos County is exposed to many hazards, all of which have the potential for disrupting the community, causing casualties, and damaging or destroying public or private property. A summary of our major hazards is provided in Figure 1. More detailed information is provided in our Hazard Analysis, published separately.

Figure 1

HAZARD SUMMARY

	Likelihood of Occurrence*	Estimated Impact on Public Health & Safety	Estimated Impact on Property
Hazard Type:	(See below)	Limited/Moderate/Major	Limited/Moderate/Major
Natural			
Drought	HIGHLY LIKELY	LIMITED	MODERATE
Earthquake	UNLIKELY	LIMITED	LIMITED
Flash Flooding	HIGHLY LIKELY	MODERATE	LIMITED
Flooding (river)	HIGHLY LIKELY	MODERATE	LIMITED
Hurricane	UNLIKELY	LIMITED	LIMITED
Subsidence	UNLIKELY	LIMITED	LIMITED
Tornado	UNLIKELY	MAJOR	MAJOR
Wildfire	HIGHLY LIKELY	LIMITED	MODERATE
Winter Storm	UNLIKELY	LIMITED	LIMITED
Infectious Disease	UNLIKELY	MAJOR	LIMITED
Technological			
Dam Failure	UNLIKELY	MODERATE	MODERATE
Energy/Fuel Shortage	OCCASIONAL	MODERATE	LIMITED
Hazmat/Oil Spill (fixed site)	OCCASIONAL	MODERATE	MODERATE
Hazmat/Oil Spill (transport)	LIKELY	MODERATE	MODERATE
Major Structural Fire	HIGHLY LIKELY	MODERATE	MAJOR
Nuclear Facility Incident	UNLIKELY	MODERATE	MODERATE

Water System Failure	OCCASIONAL	MODERATE	MODERATE
Electrical System Failure	LIKELY	MODERATE	MODERATE
Aircraft Incident	UNLIKELY	LIMITED	LIMITED
Security			
Civil Disorder	UNLIKELY	MODERATE	MODERATE
Enemy Military Attack	UNLIKELY	MAJOR	MAJOR
Terrorism	UNLIKELY	MAJOR	MAJOR
Active Attacker	UNLIKELY	MAJOR	MODERATE
* Likelihood of Occurrence: Unlikely, Occasional, Likely, or Highly Likely			

B. Assumptions

1. Brazos County will continue to be exposed to and subject to the impact of the hazards described above and as well as lesser hazards and others that may develop in the future.
2. It is possible for a major disaster to occur at any time and at any place. In many cases, dissemination of warning to the public and implementation of increased readiness measures may be possible. However, some emergency situations occur with little or no warning. Major disasters and emergencies may generate widespread media and public interest; information provided to the public needs to be accurate, timely, and reviewed by a designated Public Information Officer or Officers. The media must be considered an ally in large-scale emergencies and disasters; it can provide considerable assistance in emergency public information and warning.
3. Outside assistance will be available in most emergency situations affecting our county. Since it takes time to summon external assistance, it is essential for us to be prepared to carry out the initial emergency response on an independent basis. Further, disasters and emergencies may require extended commitment of personnel and other resources from involved agencies and jurisdictions.
4. Proper mitigation actions, such as floodplain management, fire inspections, and building inspections, can prevent or reduce disaster-related losses. Detailed emergency planning, training of emergency responders and other personnel, and conducting periodic emergency drills and exercises can improve our readiness to deal with emergency situations.

Disasters and emergencies may pose serious long-term threats to public health, property, the environment, and local economy. While responding to significant disasters and emergencies, all strategic decisions must consider each of these potential impacts.

5. All EOC staff have read the Basic Emergency Plan and its supporting documents and are prepared to work in the EOC environment.

V. CONCEPT OF OPERATIONS

A. Objectives

The objectives of our emergency management program are to protect public health and safety and preserve public and private property. Emergency operations address the entire

spectrum of contingencies, ranging from relatively minor incidents such as utility failure, to large-scale disasters such as major flash flooding. Some emergencies will be preceded by a build-up period, which, if recognized, may offer advance warning to potentially affected areas and populations. Other emergencies occur with little or no advanced warning, and therefore require a response characterized by efficient and coordinated mobilization and deployment of local resources. This section of the plan outlines how the plan will be activated and implemented, with the purpose of protecting lives, property, and the environment of Brazos County as a whole.

B. General

1. It is our responsibility to protect public health and safety and preserve property from the effects of hazardous events. We have the primary role in identifying and mitigating hazards, preparing for, and responding to, and managing the recovery from emergency situations that affect our community.
2. It is impossible for government to do everything that is required to protect the lives, property, and the environment of our population. Our citizens have the responsibility to prepare themselves and their families to cope with emergency situations and manage their affairs and property in ways that will aid the government in managing emergencies. We will assist our citizens in carrying out these responsibilities by providing public information and instructions prior to and during emergency situations.
3. Local government is responsible for organizing, training, and equipping local emergency responders and emergency management personnel, providing appropriate emergency facilities, providing suitable warning and communications systems, and for contracting for emergency services. The state and federal governments offer programs that provide some assistance with portions of these responsibilities.
4. To achieve our objectives, we have organized an emergency management program that is both integrated (employs the resources of government, organized volunteer groups, and businesses) and comprehensive (addresses mitigation, prevention, protection, response, and recovery). This plan captures the elements of the National Preparedness Goal.
5. This plan is based on an all-hazard approach to emergency planning. It addresses general functions that may need to be performed during any emergency situation and is not a collection of plans for specific types of incidents. For example, Annex A (Warning) addresses techniques that can be used to warn the public during any emergency situation, whatever the cause.
6. Departments and agencies tasked in this plan are expected to develop and keep current standard operating procedures that describe how emergency tasks will be performed. Departments and agencies are charged with ensuring the training and equipment necessary for an appropriate response are in place.
7. This plan is based upon the concept that the emergency functions that must be performed by many departments or agencies generally parallel some of their normal day-to-day functions. To the extent possible, the same personnel and material resources used for day-to-day activities will be employed during emergency situations. Because

personnel and equipment resources are limited, some routine functions that do not contribute directly to the emergency may be suspended for the duration of an emergency. The personnel, equipment, and supplies that would normally be required for those functions will be redirected to accomplish emergency tasks.

8. We have adopted the National Incident Management System (NIMS) in accordance with the President's Homeland Security Directive (HSPD)-5. Our adoption of NIMS will provide a consistent approach to the effective management of situations involving natural or man-made disasters, or terrorism. NIMS allows us to integrate our response activities using a set of standardized organizational structures designed to improve interoperability between all levels of government, private sector, and nongovernmental organizations.
9. This plan, in accordance with the National Response Framework (NRF), is an integral part of the national effort to prevent, and reduce America's vulnerability to terrorism, major disasters, and other emergencies, minimize the damage and recover from attacks, major disasters, and other emergencies that occur. In the event of an Incident of National Significance, as defined in HSPD-5, we will integrate all operations with all levels of government, private sector, and nongovernmental organizations using the NRF coordinating structures, processes, and protocols.

C. Operational Guidance

We will employ the six components of the NIMS in all operations, which will provide a standardized framework that facilitates our operations in all phases of emergency management. Attachment 7 provides further details of the NIMS.

1. Initial Response. Our emergency responders are likely to be the first on the scene of an emergency situation. They will normally take charge and remain in charge of the incident until it is resolved or others who have legal authority to do so assume responsibility. They will seek guidance and direction from our local officials and seek technical assistance from state and federal agencies and industry where appropriate.
2. Implementation of ICS
 - a. The first local emergency responder to arrive at the scene of an emergency will implement the incident command system and serve as the Incident Commander until relieved by a more senior or more qualified individual. The Incident Commander will establish an incident command post (ICP) and provide an assessment of the situation to local officials, identify response resources required, and direct the on-scene response from the ICP.
 - b. For some types of emergency situations, a specific incident scene may not exist in the initial response phase and the EOC may accomplish initial response actions, such as mobilizing personnel and equipment and issuing precautionary warnings to the public. As the potential threat becomes clearer and a specific impact site (or sites) identified, an incident command post may be established, and direction and control of the response transitioned to the Incident Commander.

3. Source and Use of Resources.

- a. We will use our own resources, all of which meet the requirements for resource management in accordance with the NIMS, to respond to emergency situations, purchasing supplies and equipment if necessary, and request assistance if our resources are insufficient or inappropriate. §418.102 of the Government Code provides that the county should be the first channel through which a municipality requests assistance when its resources are exceeded. If additional resources are required, we will:
 - 1) Summon those resources available to us pursuant to inter-local agreements. See Attachment 6 to this plan.
 - 2) Summon emergency service resources that we have contracted for. See Attachment 6.
 - 3) Request assistance from volunteer organizations active in disasters.
 - 4) Request assistance from industry or individuals who have resources needed to deal with the emergency situation.
- b. When external agencies respond to an emergency situation within our jurisdiction, we expect them to conform to the guidance and direction provided by our Incident Commander, which will be in accordance with the NIMS.

D. Incident Command System (ICS)

1. We intend to employ ICS, an integral part of the NIMS, in managing emergencies. ICS is both a strategy and a set of organizational arrangements for directing and controlling field operations. It is designed to effectively integrate resources from different agencies into a temporary emergency organization at an incident site that can expand and contract with the magnitude of the incident and resources on hand. A summary of ICS is provided in Attachment 7.
2. The Incident Commander is responsible for carrying out the ICS function of command -- managing the incident. The other major management activities that form the basis of ICS are operations, planning, logistics, and finance/administration. However, some incidents involve intensive intelligence gathering and investigative activity, and for such incidents, the Incident Commander or Unified Command may opt to reconfigure intelligence and investigations responsibilities to meet the needs of the incident. This may occur when the incident involves a criminal or terrorist act and/or other non-law-enforcement intelligence/investigations efforts such as epidemiological investigations.

For small-scale incidents, the Incident Commander and one or two individuals may perform all these functions. For larger incidents, a number of individuals from different departments or agencies may be assigned to separate staff sections charged with those functions.

3. An Incident Commander using response resources from one or two departments or agencies can handle the majority of emergency situations. Departments or agencies participating in this type of incident response will normally obtain support through their own department or agency.

4. In emergency situations where other jurisdictions or the state or federal government are providing significant response resources or technical assistance, it is generally desirable to transition from the normal ICS structure to a Unified or Area Command structure. This arrangement helps to ensure that all participating agencies are involved in developing objectives and strategies to deal with the emergency. Attachment 7 provides additional information on Unified and Area Commands.

E. ICS - EOC Interface

1. For major emergencies and disasters, the Emergency Operations Center (EOC) will be activated. When the EOC is activated, it is essential to establish a division of responsibilities between the incident command post and the EOC. A general division of responsibilities is outlined below. It is essential that a precise division of responsibilities be determined for specific emergency operations.
2. The Incident Commander is generally responsible for field operations, including:
 - a. Isolating the scene.
 - b. Directing and controlling the on-scene response to the emergency situation and managing the emergency resources committed there.
 - c. Warning the population in the area of the incident and providing emergency instructions/information to them.
 - d. Determining and implementing protective measures (evacuation or shelter-in-place) for the population in the immediate area of the incident and for emergency responders at the scene.
 - e. Implementing traffic control arrangements in and around the incident scene.
 - f. Notifying the appropriate EMC and requesting additional resources as needed.
3. The EOC is generally responsible for:
 - a. Providing resource support for incident command operations.
 - b. Issuing community-wide warning.
 - c. Issuing instructions and providing information to the general public.
 - d. Organizing and implementing large-scale evacuation.
 - e. Organizing and implementing shelter and mass care arrangements for evacuees.
 - f. Coordinating traffic control for large-scale evacuations.
 - g. Requesting assistance from the State and other external sources.
 - h. Working with the chief elected officials of the jurisdictions to declare a local state of disaster or emergency as needed as well as requesting disaster recovery assistance.
4. In some large-scale emergencies or disasters, emergency operations with different objectives may be conducted at geographically separated scenes. In such situations, more than one incident command operation may be established. If this situation occurs, a transition to an Area Command or a Unified Area Command is desirable, and the allocation of resources to specific field operations will be coordinated through the EOC.
5. Two or more distinct incidents in the same general area that, by management action, are managed under a single incident commander or unified command in order to improve efficiency and simplify incident management processes is also known as an Incident Complex.

F. State, Federal & Other Assistance

1. State & Federal Assistance

- a. If local resources are inadequate to deal with an emergency situation, the EOC will request assistance from the State. State assistance furnished to local governments is intended to supplement local resources and not substitute for such resources, including mutual aid resources, equipment purchases or leases, or resources covered by emergency service contracts. As noted previously, cities must request assistance from their county before requesting state assistance.
- b. Requests for state assistance should be made to the Disaster District Committee (DDC) Chairperson, who is located at the Texas A&M University System RELIS Campus in Bryan, Texas. See Appendix 3 to Annex M (Resource Management) for a form that can be used to request state assistance. In essence, state emergency assistance to local governments begins at the DDC level and the key person to validate a request for, obtain, and provide that state assistance and support is the DDC Chairperson. A request for state assistance must be made by the chief elected official (the County Judge/Mayor(s)) or designee and may be made via STAR board in WebEOC, email, or telephone. The DDC Chairperson has the authority to utilize all state resources within the district to respond to a request for assistance, except for the National Guard. Use of National Guard resources require approval of the Governor.
- c. The Disaster District staff will forward requests for assistance that cannot be satisfied by state resources within the District to the State Operations Center (SOC) in Austin for action.

2. Other Assistance

- a. If resources required to control an emergency situation are not available within the State, the Governor may request assistance from other states pursuant to a number of interstate compacts or from the federal government through the Federal Emergency Management Agency (FEMA).
- b. For major emergencies and disasters for which a Presidential declaration has been issued, federal agencies may be mobilized to provide assistance to states and local governments. The National Response Framework (NRF) describes the policies, planning assumptions, concept of operations, and responsibilities of designated federal agencies for various response and recovery functions. The *Nuclear/Radiological Incident Annex of the NRF* addresses the federal response to major incidents involving radioactive materials.
- c. FEMA has the primary responsibility for coordinating federal disaster assistance. No direct federal disaster assistance is authorized prior to a Presidential emergency or disaster declaration, but FEMA has limited authority to stage initial response resources near the disaster site and activate command and control structures prior to a declaration and the Department of Defense has the authority to commit its resources to save lives prior to an emergency or disaster declaration.

- d. See Annex J (Recovery) for additional information on the assistance that may be available during disaster recovery.
- e. The NRF applies to Stafford and non-Stafford Act incidents and is designed to accommodate not only actual incidents, but also the threat of incidents. Therefore, NRF implementation is possible under a greater range of incidents.

G. Emergency Authorities

1. Key federal, state, and local legal authorities pertaining to emergency management are listed in Section I of this plan.
2. Texas statutes and the Executive Order of the Governor Relating to Emergency Management provide local government, principally the chief elected official, with a number of powers to control emergency situations. If necessary, we shall use these powers during emergency situations. These powers include:
 - a. Emergency Declaration. In the event of riot or civil disorder, the County Judge and/or Mayor(s) may request the Governor to issue an emergency declaration for this jurisdiction and take action to control the situation. The use of the emergency declaration is explained in Annex U (Legal).
 - b. Disaster Declaration. When an emergency situation has caused severe damage, injury, or loss of life or it appears likely to do so, the County Judge and/or Mayor(s) may by Executive Order or proclamation declare a local state of disaster without the consent of either the city council or county commissioners, respectively. However, the declaration may last no longer than seven days unless continued by the city council or county commissioners. The County Judge and/or Mayor(s) may subsequently issue orders or proclamations referencing that declaration to invoke certain emergency powers granted the Governor in the Texas Disaster Act on an appropriate local scale in order to cope with the disaster. These powers include:
 - 1) Suspending procedural laws and rules to facilitate a timely response.
 - 2) Using all available resources of government and commandeering private property, subject to compensation, to cope with the disaster.
 - 3) Restricting the movement of people and occupancy of premises.
 - 4) Prohibiting the sale or transportation of certain substances.
 - 5) Implementing price controls.

A local disaster declaration activates the recovery and rehabilitation aspects of this plan. A local disaster declaration is required to obtain state and federal disaster recovery assistance. See Annex U (Legal) for further information on disaster declarations and procedures for invoking emergency powers.

- c. Authority for Evacuations. State law provides a County Judge or Mayor with the authority to order the evacuation of all or part of the population from a stricken or threatened area within their respective jurisdictions.

H. Actions by Phases of Emergency Management

1. This plan addresses emergency actions that are conducted during all five phases of emergency management.

- a. Prevention

Local Emergency Management and its partners will conduct activities that will lead to the prevention and avoidance of an imminent, threatened, or actual act of terrorism.

- b. Protection

Local Emergency Management and its partners will conduct preparedness activities to develop the response capabilities needed in the event of an emergency. Among the preparedness activities included in our emergency management program are:

- 1) Providing emergency equipment and facilities.
- 2) Emergency planning, including maintaining this plan, its annexes, and appropriate SOGs.
- 3) Conducting or arranging appropriate training for emergency responders, emergency management personnel, other local officials, and volunteer groups who assist us during emergencies.
- 4) Conducting periodic drills and exercises to test our plans and training.

- c. Mitigation

Local Emergency Management and its partners will conduct mitigation activities as an integral part of our emergency management program. Mitigation is intended to eliminate hazards, reduce the probability of hazards causing an emergency situation, or lessen the consequences of unavoidable hazards. Mitigation should be a pre-disaster activity, although mitigation may also occur in the aftermath of an emergency situation with the intent of avoiding repetition of the situation. Our mitigation program is outlined in Annex P (Mitigation).

- d. Response

We will respond to emergency situations effectively and efficiently. The focus of most of this plan and its annexes is on planning for the response to emergencies. Response operations are intended to resolve an emergency situation while minimizing casualties, property damage, and impacts to the environment. Response activities include warning, emergency medical services, firefighting, law enforcement operations, evacuation, shelter and mass care, emergency public information, search and rescue, as well as other associated functions.

- e. Recovery

If a disaster occurs, we will carry out a recovery program that involves both short-term and long-term efforts. Short-term operations seek to restore vital services to the community and provide for the basic needs of the public. Long-term recovery

focuses on restoring the community to its normal state. The federal government, pursuant to the Stafford Act, provides the vast majority of disaster recovery assistance. The recovery process includes assistance to individuals, businesses, and to government and other public institutions.

Examples of recovery programs include temporary housing, restoration of government services, debris removal, restoration of utilities, disaster mental health services, and reconstruction of damaged roads and bridges. Our recovery program is outlined in Annex J (Recovery).

VI. ORGANIZATION AND ASSIGNMENT OF RESPONSIBILITIES

A. Organization

1. General

Most departments and agencies of local government have emergency functions in addition to their normal day-to-day duties. During emergency situations, our normal organizational arrangements are modified to facilitate emergency operations. Our governmental organization for emergencies includes an executive group, emergency services group, and a support services group. Attachment 3 depicts our emergency organization.

2. Executive Group

The Executive Group provides guidance and direction for emergency management programs and for emergency response and recovery operations. The Executive Group includes the County Judge, Mayor(s), City Manager(s), University Executive(s), and Emergency Management Coordinator(s).

3. Emergency Services

Emergency Services include the Incident Commander and those departments, agencies, and groups with primary emergency response actions. The Incident Commander is the person in charge at an incident site.

4. Emergency Support Services

This group includes departments and agencies that support and sustain emergency responders and coordinate emergency assistance provided by organized volunteer organizations, business and industry, and other sources.

5. Volunteer and Other Services

This group includes organized volunteer groups and businesses that have agreed to provide certain support for emergency operations.

B. Assignment of Responsibilities

1. General

For most emergency functions, successful operations require a coordinated effort from a number of departments, agencies, and groups. To facilitate a coordinated effort, elected and appointed officials, departments and agency heads, and other personnel are assigned primary responsibility for planning and coordinating specific emergency functions. Generally, primary responsibility for an emergency function will be assigned to an individual from the department or agency that has legal responsibility for that function or possesses the most appropriate knowledge and skills. Other officials, departments, and agencies may be assigned support responsibilities for specific emergency functions. Attachment 4 summarizes the general emergency responsibilities of local officials, department and agency heads, and other personnel.

2. The individual having primary responsibility for an emergency function is normally responsible for coordinating preparation of and maintaining that portion of the emergency plan that addresses that function. Plan and annex assignments are outlined in Attachment 5. Listed below are general responsibilities assigned to the Executive Group, Emergency Services, Support Services, and other Support Agencies. Additional specific responsibilities can be found in the functional annexes to this Basic Plan.
3. Executive Group Responsibilities
 - a. The County Judge and/or Mayor(s) and/or University Executives will:
 - 1) Establish objectives and priorities for the emergency management program and provide general policy guidance on the conduct of that program.
 - 2) Monitor the emergency response during disaster situations and provide direction where appropriate.
 - 3) With the assistance of the Public Information Officer (PIO) and the Joint Information Center (JIC), keep the public informed during emergency situations.
 - 4) With the assistance of the legal staff, declare a local state of disaster, request the Governor declare a state of emergency, or invoke the emergency powers of government when necessary (except University Executives).
 - 5) Request assistance from other local governments or the State when necessary.
 - 6) Direct activation of the EOC.
 - b. The County Judge, Mayor(s), City Manager(s), University Assistant VP for Safety and Security and EMC(s) will:
 - 1) Implement the policies and decisions of the governing body relating to emergency management.
 - 2) Organize the emergency management program and identifies personnel, equipment, and facility needs.
 - 3) Assign emergency management program tasks to departments and agencies.

- 4) Ensure that departments and agencies participate in emergency planning, training, and exercise activities.
 - 5) Coordinate the operational response of local emergency services.
 - 6) Coordinate activation of the EOC and supervise its operation.
- c. The Emergency Management Coordinator(s) will:
- 1) Serve as the staff advisor to our County Judge, Mayor(s), and City Manager(s) on emergency management matters.
 - 2) Keep the County Judge, Mayor(s), and City Manager(s), as well as our governing body, apprised of our preparedness status and emergency management needs.
 - 3) Coordinate local planning and preparedness activities and the maintenance of this plan.
 - 4) Prepare and maintain a resource inventory.
 - 5) Arrange appropriate training for local emergency management personnel and emergency responders.
 - 6) Coordinate periodic emergency exercises to test our plan and training.
 - 7) Manage the EOC, develop procedures for its operation, and conduct training for those who staff it.
 - 8) Activate the EOC when required.
 - 9) Perform day-to-day liaison with the state emergency management staff and other local emergency management personnel.
 - 10) Coordinate with organized volunteer groups and businesses regarding emergency operations.
4. Common Responsibilities.
- All emergency services and support services will:
- a. Provide personnel, equipment, and supplies to support emergency operations as able, upon request.
 - b. Develop and maintain SOGs for emergency tasks.
 - c. Provide trained personnel to staff the incident command post and EOC and conduct emergency operations.

- d. Provide current information on emergency resources for inclusion in the Resource List in Appendix 1 to Annex M (Resource Management).
 - e. Report information regarding emergency situations and damage to facilities and equipment to the Incident Commander or the EOC.
5. Emergency Services Responsibilities.
- a. The Incident Commander will:
 - 1) Manage emergency response resources and operations at the incident site command post to resolve the emergency situation.
 - 2) Determine and implement required protective actions for response personnel and the public at an incident site.
 - b. Warning.
 - 1) Primary responsibility for this function is assigned to the Police Chief(s) and/or County Sheriff who, with assistance from the EMC(s), will prepare and maintain Annex A (Warning) to this plan and supporting SOGs.
 - 2) Emergency tasks to be performed include:
 - a) Receive information on emergency situations.
 - b) Alert key local officials of emergency situations.
 - c) Disseminate warning information and instructions to the public through available warning systems ensuring the needs of the whole community are addressed.
 - d) Disseminate warnings and instructions to special facilities such as schools and hospitals.
 - c. Communications.
 - 1) Primary responsibility for this function is assigned to the Police Chief(s) and/or County Sheriff who, with assistance from the EMCs, will prepare and maintain Annex B (Communications) to this plan and supporting SOGs.
 - 2) Emergency tasks to be performed include:
 - a) Identify the communications systems available within the local area and determine the connectivity of those systems and ensure their interoperability.
 - b) Develop plans and procedures for coordinated use of the various communications systems available in this jurisdiction during emergencies.
 - c) Determine and implement means of augmenting communications during emergencies, including support by volunteer organizations.

- d. Radiological Protection.
- 1) Primary responsibility for this function is assigned to the Fire Chief(s) who, with assistance from the EMCs, will prepare and maintain Annex D (Radiological Protection) to this plan and supporting SOGs.
 - 2) Emergency tasks to be performed include:
 - a) Maintain inventory of radiological equipment.
 - b) Ensure response forces include personnel with current training in radiological monitoring and decontamination.
 - c) Respond to radiological incidents and terrorist incidents involving radiological materials.
 - d) Make notification concerning radiological incidents to state and federal authorities.
- e. Evacuation.
- 1) Primary responsibility for this function is assigned to the Police Chief(s) and/or Sheriff who, with assistance from the EMCs, will prepare and maintain Annex E (Evacuation) to this plan and supporting SOGs.
 - 2) Emergency tasks to be performed include:
 - a) Identify areas where an evacuation has occurred, or may in the future, and determine the population at risk.
 - b) Perform evacuation planning for known risk areas to include route selection and determination of traffic control requirements.
 - c) Develop simplified planning procedures for ad hoc evacuations.
 - d) Determine emergency public information requirements.
 - e) Perform evacuation planning for functional and access needs facilities (schools, hospitals, nursing homes, and other institutions) and/or review plans prepared by the facility as requested.
- f. Firefighting.
- 1) Primary responsibility for this function is assigned to the Fire Chief(s) who, with assistance from the EMCs, will prepare and maintain Annex F (Firefighting) to this plan and supporting SOGs.
 - 2) Emergency tasks to be performed include:
 - a) Fire prevention activities.
 - b) Fire detection and control.
 - c) Hazardous material and oil spill response.
 - d) Terrorist incident response.
 - e) Evacuation support.
 - f) Post-incident reconnaissance and damage assessment.
 - g) Fire safety inspection of temporary shelters.
 - h) Prepare and maintain fire resource inventory.

g. Law Enforcement.

- 1) Primary responsibility for this function is assigned to the Police Chief(s) and/or Sheriff who, with assistance from the EMCs, will prepare and maintain Annex G (Law Enforcement) to this plan and supporting SOGs.
- 2) Emergency tasks to be performed include:
 - a) Maintenance of law and order.
 - b) Traffic control.
 - c) Terrorist incident response.
 - d) Provision of security for vital facilities, evacuated areas, and shelters.
 - e) Access control for damaged or contaminated areas.
 - f) Warning support.
 - g) Post-incident reconnaissance and damage assessment.
 - h) Prepare and maintain law enforcement resource inventory.

h. Health and Medical Services.

- 1) Primary responsibility for this function is assigned to the Public Health Office, who with assistance from the EMCs, will prepare and maintain Annex H (Health & Medical Services) to this plan and supporting SOGs.
- 2) Emergency tasks to be performed include:
 - a) Coordinate health and medical support during emergency situations.
 - b) Public health information and education.
 - c) Inspection of food and water supplies.
 - d) Develop emergency public health regulations and orders.

i. Direction and Control.

- 1) Primary responsibility for this function is assigned to the County Judge and/or Mayor(s) and/or designated University Executives and EMCs who will prepare and maintain Annex N (Direction & Control) to this plan and supporting SOGs.
- 2) Emergency tasks to be performed include:
 - a) Direct and control our local operating forces.
 - b) Maintain coordination with neighboring jurisdictions and the Disaster District in Bryan, Texas.
 - c) Maintain the EOC in an operating mode or be able to convert the designated facility space into an operable EOC rapidly.
 - d) Assign representatives, by title, to report to the EOC and develops procedures for crisis training.
 - e) Develop and identify the duties of the staff, use of displays and message forms, and procedures for EOC activation.
 - f) Coordinate the evacuation of areas at risk.

j. Hazardous Materials & Oil Spill.

- 1) The primary responsibility for this function is assigned to the Fire Chief(s) who, with assistance from the EMCs will prepare and maintain Annex Q (Hazardous Material & Oil Spill Response) to this plan and supporting SOGs.
- 2) Emergency tasks to be performed include:
 - a) In accordance with OSHA regulations, establish ICS to manage the response to hazardous materials incidents.
 - b) Establish the hazmat incident functional areas (e.g., Hot Zone, Warm Zone, Cold Zone, etc.)
 - c) Determine and implement requirements for personal protective equipment for emergency responders.
 - d) Initiate appropriate actions to control and eliminate the hazard in accordance with established hazmat response guidance and SOGs.
 - e) Determine areas at risk and which public protective actions, if any, should be implemented.
 - f) Apply appropriate firefighting techniques if the incident has, or may, result in a fire.
 - g) Determine when affected areas may be safely reentered.

k. Search & Rescue.

- 1) The primary responsibility for this function is assigned to the Fire Chief(s) who, with assistance from the EMCs, will prepare and maintain Annex R (Search and Rescue) to this plan and supporting SOGs.
- 2) Emergency tasks to be performed include:
 - a) Coordinate and conduct search and rescue activities.
 - b) Identify requirements for specialized resources to support rescue operations.
 - c) Coordinate external technical assistance and equipment support for search and rescue operations.

l. Terrorist Incident Response.

- 1) Primary responsibility for this function is assigned to the Police Chief(s) and/or Sheriff who, with assistance from the EMCs, will prepare and maintain Annex V (Terrorist Incident Response) to this plan and supporting SOGs.
- 2) Emergency tasks to be performed include:
 - a) Coordinate and carry out defensive anti-terrorist activities, including criminal intelligence, investigation, protection of facilities, and public awareness activities.
 - b) Coordinate and carry out offensive counter-terrorist operations to neutralize terrorist activities.
 - c) Carry out terrorism consequence operations conducted in the aftermath of a terrorist incident to save lives and protect public and private property.

- d) Ensure required notification of terrorist incidents is made to state and federal authorities.

6. Support Services Responsibilities.

a. Shelter and Mass Care.

- 1) Primary responsibility for this function is assigned to the EMCs who will prepare and maintain Annex C (Shelter and Mass Care) to this plan and supporting SOGs.
- 2) Emergency tasks to be performed include:
 - a) Perform emergency shelter and mass care planning.
 - b) Coordinate and conduct shelter and mass care operations with our other departments, relief agencies, and volunteer groups.

b. Public Information.

- 1) Primary responsibility for this function is assigned to the Chief Elected Officials and County, City and/or Texas A&M University Public Information Officers who, with assistance from the EMCs will prepare and maintain Annex I (Public Information) to this plan and supporting SOGs.
- 2) Emergency tasks to be performed include:
 - a) Establish a Joint Information Center (JIC).
 - b) Conduct on-going hazard awareness and public education programs.
 - c) Pursuant to the Joint Information System (JIS), compile and release information and instructions for the public during emergency situations and respond to questions relating to emergency operations.
 - d) Provide information to the media and the public during emergency situations.
 - e) Arrange for media briefings.
 - f) Compiles print and photo documentation of emergency situations.

c. Recovery.

- 1) Primary responsibility for this function is assigned to the EMCs and/or Finance Director(s) and Tax Assessor. The EMCs will prepare and maintain Annex J (Recovery) to this plan and supporting SOGs.
- 2) Emergency tasks to be performed include:
 - a) Establish and train a damage assessment team using local personnel. Coordinate the efforts of that team with state and federal damage assessment personnel who may be dispatched to assist us.
 - b) Assess and compile information on damage to public and private property and needs of disaster victims and formulate and carry out programs to fill those needs.

- c) If damages are beyond our capability to deal with, compile information for use by our elected officials in requesting state or federal disaster assistance.
- d) If we are determined to be eligible for state or federal disaster assistance, coordinate with state and federal agencies to carry out authorized recovery programs.

d. Public Works & Engineering.

- 1) Primary responsibility for this function is assigned to the County Engineer and/or City Public Works Director(s) who, with assistance from the EMC, will prepare and maintain Annex K (Public Works & Engineering) to this plan and supporting SOGs.
- 2) Emergency tasks to be performed include:
 - a) Protect government facilities and vital equipment where possible.
 - b) Assess damage to streets, bridges, traffic control devices, and other public facilities.
 - c) Direct temporary repair of vital facilities.
 - d) Restore damaged roads and bridges.
 - e) Restore waste treatment and disposal systems.
 - f) Arrange for debris removal.
 - g) General damage assessment support.
 - h) Building inspection support.
 - i) Provide specialized equipment to support emergency operations.
 - j) Support traffic control and search and rescue operations.

e. Utilities.

- 1) Primary responsibility for this function is assigned to the Public Utilities Director(s) who, with assistance from the EMCs, will prepare and maintain Annex L (Energy and Utilities) to this plan and supporting SOGs.
- 2) Emergency tasks to be performed include:
 - a) Prioritize restoration of utility service to vital facilities and other facilities.
 - b) Arrange for the provision of emergency power sources where required.
 - c) Identify requirements for emergency drinking water and portable toilets to the department or agency responsible for mass care.
 - d) Assess damage to, repair, and restore public utilities.
 - e) Monitor recovery activities of privately owned utilities.

f. Resource Management.

- 1) Primary responsibility for this function is assigned to the EMCs, who will seek guidance and assistance as needed from Human Resources Directors, Finance Directors, and Purchasing Officials. The EMCs will prepare and maintain Annex M (Resource Management) to this plan and supporting SOGs.
- 2) Emergency tasks to be performed include:

- a) Maintain an inventory of emergency resources.
- b) During emergency operations, locates supplies, equipment, and personnel to meet specific needs.
- c) Maintain a list of suppliers for supplies and equipment needed immediately in the aftermath of an emergency.
- d) Establish emergency purchasing procedures and coordinate emergency procurements.
- e) Establish and maintain a manpower reserve and coordinate assignment of reserve personnel to departments and agencies that require augmentation.
- f) Coordinate transportation, sorting, temporary storage, and distribution of resources during emergency situations.
- g) Establish staging areas for resources, if required.
- h) During emergency operations, identify to the Donations Management Coordinator those goods, services, and personnel that are needed.
- i) Maintain records of emergency-related expenditures for purchases and personnel.

g. Human Services.

- 1) Primary responsibility for this function is assigned to the EMCs, who will seek guidance and assistance as needed from local volunteer groups and/or organized disaster relief agencies. EMCs will prepare and maintain Annex O (Human Services) to this plan and supporting SOGs.
- 2) Emergency tasks to be performed include:
 - a) Identify emergency feeding sites.
 - b) Identify sources of clothing for disaster victims.
 - c) Secure emergency food supplies.
 - d) Coordinate the operation of shelter facilities, whether operated by local government, local volunteer groups, or organized disaster relief agencies such as the American Red Cross.
 - e) Coordinate special care requirements for disaster victims such as the aged, functional and access needs individuals, and others.
 - f) Coordinate the provision of disaster mental health services to disaster victims, emergency workers, and/or others suffering trauma due to the emergency incident/disaster.

h. Hazard Mitigation.

- 1) The primary responsibility for this function is assigned to the EMCs, who with assistance from the Hazard Mitigation Coordinator, will prepare and maintain Annex P (Hazard Mitigation) to this plan and supporting SOGs.
- 2) Emergency tasks to be performed include:
 - a) Maintain the local Hazard Analysis.
 - b) Identify beneficial pre-disaster hazard mitigation projects and seek approval from local officials to implement such projects.

- c) In the aftermath of an emergency, determine appropriate actions to mitigate the situation and coordinate implementation of those actions.
 - d) Coordinate and carry out post-disaster hazard mitigation program.
- i. Transportation.
 - 1) The primary responsibility for this function is assigned to the EMCs and Transportation Director(s)/Supervisor(s) who will prepare and maintain Annex S (Transportation) to this plan and supporting SOGs.
 - 2) Emergency tasks to be performed include:
 - a) Identifies local public and private transportation resources and coordinates their use in emergencies.
 - b) Coordinates deployment of transportation equipment to support emergency operations.
 - c) Establishes and maintains a reserve pool of drivers, maintenance personnel, parts, and tools.
 - d) Maintains records on use of transportation equipment and personnel for purpose of possible reimbursement.
- j. Donations Management.
 - 1) The primary responsibility for this function is assigned to The Salvation Army, who, with assistance from the EMC(s), will prepare and maintain Annex T (Donations Management) to this plan and supporting SOGs. The United Way of the Brazos Valley will be tasked with soliciting and managing financial donations.
 - 2) Emergency tasks to be performed include:
 - a) Compile resource requirements identified by the Resource Management staff.
 - b) Solicit donations to meet known needs.
 - c) Establish and implement procedures to receive, accept or turn down offers of donated goods and services, and provide instructions to donors of needed goods or services.
 - d) In coordination with the Resource Management staff, establish a facility to receive, sort, and distribute donated goods.
- k. Legal.
 - 1) The primary responsibility for this function is assigned to the City Attorney and/or County Attorney and/or Texas A&M University System Office of General Council who, with assistance from the EMC(s), will prepare and maintain Annex U (Legal) to this plan and supporting SOGs.
 - 2) Emergency tasks to be performed include:
 - a) Advise local officials on emergency powers of local government and procedures for invoking those measures.

- b) Review and advise our officials on possible legal issues arising from disaster operations.
 - c) Prepare and/or recommend legislation to implement the emergency powers that may be required during an emergency.
 - d) Advise local officials and department heads on record-keeping requirements and other documentation necessary for the exercising of emergency powers.
- I. Department and agency heads that are not assigned a specific function in this plan will be prepared to make their resources available for emergency duty at the direction of their chief elected official(s).

7. Volunteer & Other Services.

- a. Volunteer Groups. The following are local volunteer agencies that can provide disaster relief services and traditionally have coordinated their efforts with our local government:

- 1) HEART OF TEXAS Chapter of the American Red Cross, office is located in Bryan and Waco, Texas.

Provides shelter management, feeding at fixed facilities and through mobile units, first aid, replacement of eyeglasses and medications, provision of basic clothing, and limited financial assistance (if available) to those affected by emergency situations. The Red Cross also provides feeding for emergency workers.

- 2) The Salvation Army.

Provides emergency assistance to include mass and mobile feeding, temporary shelter, counseling, missing person services, medical assistance, and the warehousing and distribution of donated goods including food clothing, and household items. Also provides referrals to government and private agencies for special services.

- 3) Southern Baptist Convention Disaster Relief.

Provides mobile feeding units staffed by volunteers. Active in providing disaster childcare, the agency has several mobile childcare units. Can also assist with clean-up activities, temporary repairs, reconstruction, counseling, and bilingual services.

- 4) ARES/RACES.

The Amateur Radio Emergency Service/Radio Amateur Civil Emergency Service provides amateur radio support for emergency operations, including communications support in the EOC.

- b. Business Support.

There are no pre-positioned contracts with the following local businesses, but these companies have previously agreed to provide support for emergency operations:

- 1) HEB
- 2) Lowes
- 3) Home Depot
- 4) Walmart

VII. DIRECTION AND CONTROL

A. General

1. The County Judge and/or Mayor(s), and/or the University Chief Operating Officer is responsible for establishing objectives and policies for emergency management and providing general guidance for disaster response and recovery operations, all in compliance with the NIMS. During disasters, the CEO(s) may carry out those responsibilities from the EOC.
2. The EMC(s) will provide overall direction of the response activities of all our departments. During major emergencies and disasters, he/she will normally carry out those responsibilities from the EOC.
3. The EMC(s) will manage the EOC.
4. The Incident Commander, assisted by a staff sufficient for the tasks to be performed, will manage the emergency response at an incident site.
5. During emergency operations, department heads retain administrative and policy control over their employees and equipment. However, personnel and equipment will carry out mission assignments directed by the incident commander. Each department and agency are responsible for having its own operating procedures to be followed during response operations, but interagency procedures, such as common communications protocol, may be adopted to facilitate a coordinated effort.
6. If our own resources are insufficient or inappropriate to deal with an emergency situation, we may request assistance from other jurisdictions, organized volunteer groups, or the State. The process for requesting State or federal assistance is covered in section V.F of this plan; see also the Request for Assistance form in Annex M, Appendix 3. External agencies are expected to conform to the general guidance and direction provided by our senior decision-makers.

B. Emergency Facilities

1. Incident Command Post. Except when an emergency situation threatens, but has not yet occurred, and those situations for which there is no specific hazard impact site (such as a severe winter storm or area-wide utility outage), an incident command post or command posts will be established in the vicinity of the incident site(s). As noted previously, the incident commander will be responsible for directing the emergency response and managing the resources at the incident scene.

2. Emergency Operating Center (EOC). When major emergencies and disasters have occurred or appear imminent, we will activate our EOC, which is located in Bryan, TX near the Brazos County Courthouse.
3. The following individuals are authorized to activate the EOC:
 - a. County Judge and/or EMC
 - b. Mayor(s), City Manager(s) and/or the EMC(s)
 - c. University President, University Chief Operating Officer and/or University EM personnel
4. The general responsibilities of the EOC are to:
 - a. Assemble accurate information on the emergency situation and current resource data to allow local officials to make informed decisions on courses of action.
 - b. Working with representatives of emergency services, determine and prioritize required response actions and coordinate their implementation.
 - c. Provide resource support for emergency operations.
 - d. Suspend or curtail government services, recommend the closure of schools and businesses, and cancellation of public events.
 - e. Organize and activate large-scale evacuation and mass care operations.
 - f. Provide emergency information to the public.
5. Representatives of those departments and agencies assigned emergency functions in this plan will staff the EOC. EOC operations are addressed in Annex N (Direction and Control). The interface between the EOC and the incident command post is described in paragraph V.E above.
6. Our alternate EOC is located at Kyle Field Command, 756 Houston Street, on the Texas A&M University Campus in College Station, TX. This facility will be used if our primary EOC becomes unusable.
7. We have a mobile command and control vehicle, operated by the City of Bryan Fire Department, which may be used as an incident command post.

C. Line of Succession

1. The line of succession for the County Judge is:
 - a. County Judge
 - b. County Judge Pro-Tem
 - c. County Commissioners (in order of their seniority on the Commissioners' Court)
2. The line of succession for the Mayor is:

- a. Mayor
 - b. Mayor Pro-Tem
 - c. City Council Members (in order of their seniority on the City Council)
3. The line of succession for the City Manager(s) is:
- a. City Manager
 - b. Deputy/Assistant City Manager
 - c. Assistant City Manager (City of College Station); Public Works Director (City of Bryan)
4. The line of succession for the Texas A&M Chief Operating Officer is:
- a. Chief Operating Officer
 - b. Executive Director of Emergency Management
 - c. Associate Director and/or Assistant Director of Emergency Management
5. The line of succession for the Emergency Management Coordinator is:
- a. Emergency Management Coordinator
 - b. Deputy EMC or Assistant EMC
 - c. EMC from our interjurisdictional partners; Fire Chief or Assistant Fire Chief (City of Bryan)
6. The lines of succession for each of our department and agency heads shall be in accordance with the SOGs established by those departments and agencies.

VIII. READINESS LEVELS

- A.** Many emergencies follow some recognizable build-up period during which actions can be taken to achieve a gradually increasing state of readiness. We use a four-tier system. Readiness Levels will be determined by the County Judge, and/or Mayors or, for certain circumstances, the Emergency Management Coordinator. General actions to be taken at each readiness level are outlined in the annexes to this plan; more specific actions will be detailed in departmental or agency SOPs/SOGs.
- B.** The following Readiness Levels will be used as a means of increasing our alert posture.
- 1. Level 4: Normal Conditions
 - a. Emergency incidents occur and local officials are notified. One or more departments or agencies respond to handle the incident; an incident command post may be established. Limited assistance may be requested from other jurisdictions pursuant to established inter-local agreements.
 - b. The normal operations of the government are not affected.
 - 2. Level 3: Increased Readiness

- a. Increased Readiness refers to a situation that presents a greater potential threat than “Level 4” but poses no immediate threat to life and/or property. Increased readiness actions may be appropriate when the situations like the following occur:
 - 1) Tropical Weather Threat. A tropical weather system has developed that has the potential to impact the local area. Readiness actions may include regular situation monitoring, a review of plans and resource status, determining staff availability and placing personnel on call.
 - 2) Tornado Watch. indicates possibility of tornado development. Readiness actions may include increased situation monitoring and placing selected staff on alert.
 - 3) Flash Flood Watch. indicates flash flooding is possible due to heavy rains occurring or expected to occur. Readiness actions may include increased situation-monitoring, reconnaissance of known trouble spots, deploying warning signs.
 - 4) Wildfire Threat. During periods of extreme wildfire threat, readiness actions may include deploying additional resources to areas most at risk, arranging for standby commercial water tanker support, conducting daily aerial reconnaissance, or initiating burn bans.
 - 5) Mass Gathering. For mass gatherings with or without a previous history of problems, readiness actions may include reviewing security, traffic control, fire protection, and first aid planning with organizers and determining additional requirements.
 - b. Declaration of “Level 3” will generally require the initiation of the “Increased Readiness” activities identified in each annex to this plan.
3. Level 2: High Readiness
- a. High Readiness refers to a situation with a significant potential and probability of causing loss of life and/or property. This condition will normally require some degree of warning to the public. Actions could be triggered by severe weather warning information issued by the National Weather Service such as:
 - 1) Tropical Weather Threat. A tropical weather system may impact the local area within 72 hours. Readiness actions may include continuous storm monitoring, identifying worst-case decision points, increasing preparedness of personnel and equipment, updating evacuation checklists, verifying evacuation route status, and providing the public information for techniques to protect homes and businesses on the evacuation routes.
 - 2) Tornado Warning. Issued when a tornado has been sighted in the vicinity or indicated by radar and might strike in the local area. Readiness actions may include activating the EOC, continuous situation monitoring, and notifying the public about the warning.

- 3) Flash Flood Warning. Issued to alert persons that flash flooding is imminent or occurring on certain streams or designated areas, and immediate action should be taken. Readiness actions may include notifying the public about the warning, evacuating low-lying areas, opening emergency shelters to house evacuees, and continuous situation monitoring.
 - 4) Winter Storm Warning. Issued when heavy snow, sleet, or freezing rain are forecast to occur separately or in a combination. Readiness actions may include preparing for possible power outages, putting road crews on stand-by to clear and/or sand the roads, and continuous situation monitoring.
 - 5) Mass Gathering. Civil disorder with relatively large-scale localized violence is imminent. Readiness actions may include increased law enforcement presence, putting hospitals and fire departments on alert, and continuous situation monitoring.
- b. Declaration of a “Level 2” will generally require the initiation of the “High Readiness” activities identified in each annex to this plan.
4. Level 1: Maximum Readiness
- a. Maximum Readiness refers to a situation where hazardous conditions are imminent. This condition denotes a greater sense of danger and urgency than associated with a “Level 2” event. Actions could also be generated by severe weather warning information issued by the National Weather Service combined with factors making the event more imminent.
- 1) Tropical Weather Threat. The evacuation decision period is nearing for an approaching tropical weather system that may impact the local area. Readiness actions may include continuous situation monitoring, full activation of the EOC, recommending precautionary actions for special facilities, pre-positioning emergency personnel and equipment for emergency operations, and preparing public transportation resources for evacuation support.
 - 2) Tornado Warning. A tornado has been sighted close to a populated area or is moving toward a populated area. Readiness actions may include taking immediate shelter and putting damage assessment teams on stand-by.
 - 3) Flash Flood Warning. Flooding is imminent or is occurring at specific locations. Readiness actions may include evacuations, putting rescue teams on alert, sheltering evacuees and/or others displaced by the flooding and continuous monitoring of the situation.
 - 4) Mass Gathering. Civil disorder is about to erupt into large-scale and widespread violence. Readiness actions may include having all EMS units on stand-by, all law enforcement present for duty, notifying the DDC that assistance may be needed and keeping them apprised of the situation, and continuous situation monitoring is required.

- b. Declaration of “Level 1” will generally require the initiation of the “Maximum Readiness” activities identified in each annex to this plan.

IX. ADMINISTRATION AND SUPPORT

A. Agreements and Contracts

1. Should our local resources prove to be inadequate during an emergency, requests will be made for assistance from other local jurisdictions, other agencies, and industry in accordance with existing mutual-aid agreements and contracts and those agreements and contracts entered into during the emergency. Such assistance may include equipment, supplies, or personnel. All agreements will be entered into by authorized officials and should be in writing whenever possible. Agreements and contracts should identify the local officials authorized to request assistance pursuant to those documents.
2. In an effort to facilitate assistance pursuant to mutual aid agreements, our available resources are identified.
3. The agreements and contracts pertinent to emergency management (that we are a party to) are summarized in Attachment 6.

B. Reports

1. Hazardous Materials Spill Reporting. If we are responsible for a release of hazardous materials of a type or quantity that must be reported to state and federal agencies, the department or agency responsible for the spill shall make the required report. See Annex Q (Hazardous Materials and Oil Spill Response) for more information. If the party responsible for a reportable spill cannot be located, the Incident Commander shall ensure that the required report(s) are made.
2. Initial Emergency Report. This short report should be prepared and transmitted by the EOC when an on-going emergency incident appears likely to worsen and we may need assistance from other local governments or the State. See Annex N (Direction and Control) for the format and instructions for this report.
3. Situation Report. A daily situation report should be prepared and distributed by the EOC during major emergencies or disasters. See Annex N (Direction and Control) for the format of and instructions for this report.
4. Other Reports. Several other reports covering specific functions are described in the annexes to this plan.

C. Records

1. Record Keeping for Emergency Operations

Our local governments are responsible for establishing the administrative controls necessary to manage the expenditure of funds and to provide reasonable accountability

and justification for expenditures made to support emergency operations. This shall be done in accordance with the established local fiscal policies and standard cost accounting procedures.

- a. Activity Logs. The Incident Command Post and the EOC shall maintain accurate logs recording key response activities, including:
 - 1) Activation or deactivation of emergency facilities.
 - 2) Emergency notifications to other local governments and to state and federal agencies.
 - 3) Significant changes in the emergency situation.
 - 4) Major commitments of resources and/or requests for additional resources from external sources.
 - 5) Issuance of protective action recommendations to the public.
 - 6) Evacuations and road closures/impacts
 - 7) Casualties.
 - 8) Containment or termination of the incident.
- b. Incident Costs. All departments and agencies shall maintain records summarizing the use of personnel, equipment, and supplies during the response to day-to-day incidents to obtain an estimate of annual emergency response costs that can be used as in preparing future department or agency budgets.
- c. Emergency or Disaster Costs. For major emergencies or disasters, all departments and agencies participating in the emergency response shall maintain detailed records of costs for emergency operations to include:
 - 1) Personnel costs, especially overtime costs
 - 2) Equipment operations costs
 - 3) Costs for leased or rented equipment
 - 4) Costs for contract services to support emergency operations
 - 5) Costs of specialized supplies expended for emergency operations

These records may be used to recover costs from the responsible party or insurers or as a basis for requesting financial assistance for certain allowable response and recovery costs from the state and/or federal government.

2. Preservation of Records

- a. In order to continue normal government operations following an emergency situation or disaster, vital records must be protected. These include legal documents as well as property and tax records. The principal causes of damage to records are fire and water; therefore, essential records should be protected accordingly. Each agency responsible for the preparation of annexes to this plan will include protection of vital records in its SOPs/SOGs.
- b. If records are damaged during an emergency situation, we will seek professional assistance to preserve and restore them.

D. Training

It will be the responsibility of each agency director/department head to ensure that agency personnel, in accordance with the NIMS, possess the level of training, experience, credentialing, currency, physical and medical fitness, or capability for any positions they are tasked to fill.

E. Consumer Protection

Consumer complaints regarding alleged unfair or illegal business practices often occur in the aftermath of a disaster. Such complaints will be referred to the County and/or City Attorney, who will pass such complaints to the Consumer Protection Division of the Office of the Attorney General.

F. Post-Incident and Exercise Review

The EMCs are responsible for organizing and conducting a critique following the conclusion of a significant emergency event/incident or exercise. The After Action Report (AAR) will entail both written and verbal input from all appropriate participants. An Improvement Plan will be developed based on the deficiencies identified, and an individual, department, or agency will be assigned responsibility for correcting the deficiency and a due date shall be established for that action.

X. PLAN DEVELOPMENT AND MAINTENANCE

A. Plan Development

The County Judge, Mayors, and TAMU Chief Operating Officer are responsible for approving and promulgating this plan.

B. Distribution of Planning Documents

1. The Basic Plan and annexes to the Brazos County Interjurisdictional Plan are updated and then uploaded to bcdem.org/emergency/plans so that any individuals, departments, agencies, and organizations tasked in the Plan can have access readily to those documents. On occasion, certain information in the annexes may be redacted and copies should be distributed accordingly. A hard copy of the plan should be kept on hand at the CEOC in event access to critical infrastructure is lost.
2. The Basic Plan should include a distribution list (See Attachment 1 to this plan) that indicates who should receive notification of updates or changes to the Basic Plan and the various annexes to it. In general, individuals who receive annexes to the basic plan should also receive a copy of this plan, because the Basic Plan describes our emergency management organization and basic operational concepts. In some cases, the plan may be distributed electronically or via the internet.

C. Review

The Basic Plan and its annexes shall be reviewed annually by local officials. The EMCs will establish a schedule for annual review of planning documents by those tasked in them.

D. Update

1. This plan will be updated based upon deficiencies identified during actual emergency situations, exercises, and when changes in threat hazards, resources and capabilities, or government structure occur.
2. The Basic Plan and its annexes must be revised or updated by a formal change at least **every five years**. Responsibility for revising or updating the Basic Plan is assigned to the EMCs. Responsibility for revising or updating the annexes to this plan is outlined in Section VI.B, Assignment of Responsibilities, as well as in each annex. For details on the methods of updating planning documents as well as more information reach out to your TDEM region Planner.
3. Revised or updated planning documents will be provided to all departments, agencies, and individuals tasked in those documents.
4. §418.043(4) of the Government Code provides that TDEM Periodically review local and interjurisdictional emergency management plans. The Brazos County EMC is responsible for submitting copies of planning documents to our TDEM Plans Section for review. This may be done electronically.

ATTACHMENTS:

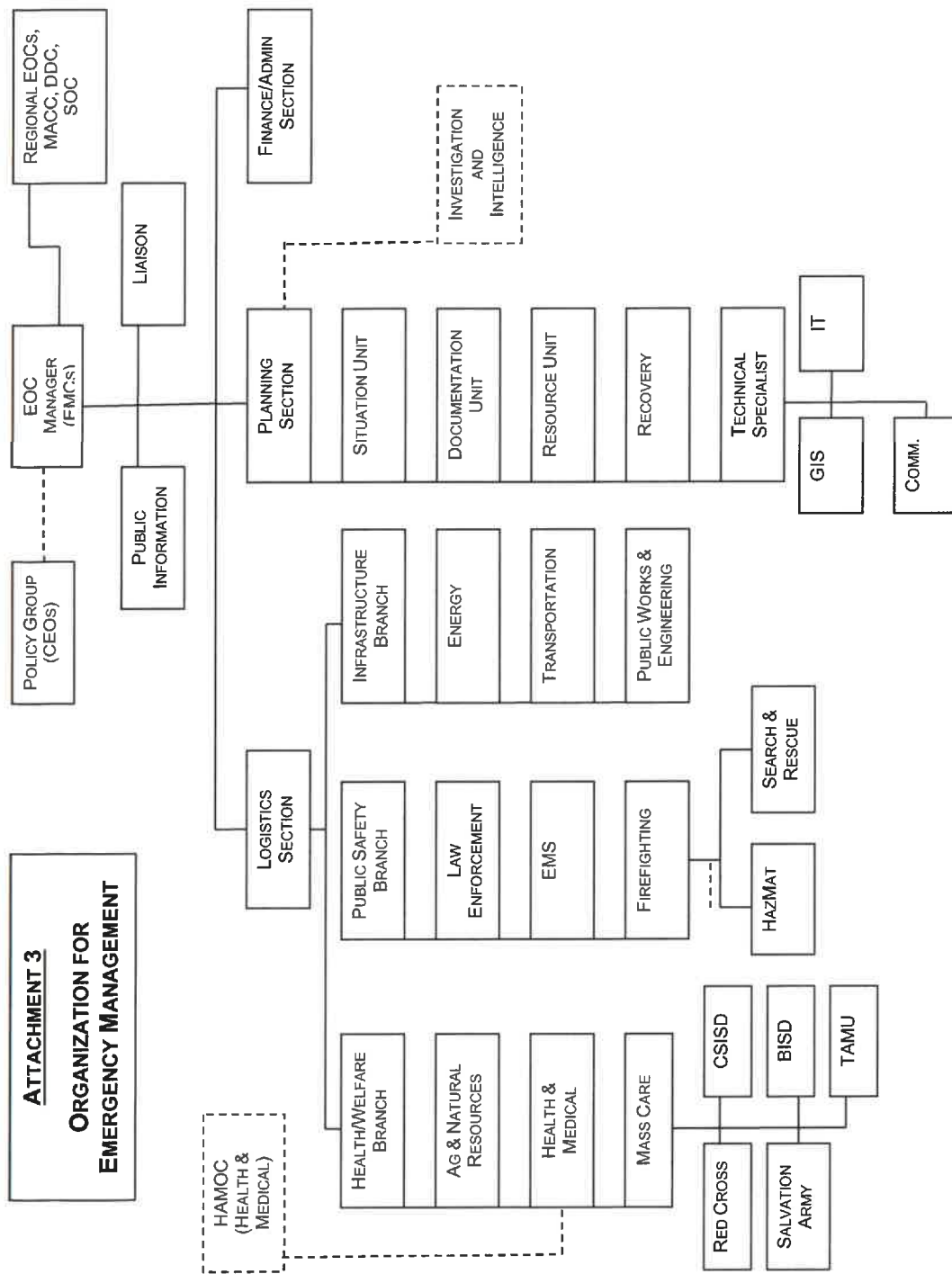
1. Distribution List
2. References
3. Organization for Emergencies
4. Functional Responsibility Matrix
5. Annex Assignments
6. Summary of Agreements & Contracts
7. National Incident Management System

<p align="center">ATTACHMENT 1 - DISTRIBUTION LIST</p> <p align="center">WILL BE DISTRIBUTED ELECTRONICALLY THROUGH THE BRAZOS COUNTY</p> <p align="center">EMERGENCY MANAGEMENT WEBSITE</p>

<u>Jurisdiction/Agency Plan</u>	<u>Basic Plan</u>	<u>Annexes</u>
EOC	Yes	All
County Judge/Mayors	Yes	All
City Managers	Yes	All
Each County Commissioner	Yes	All
EMCs	Yes	All
City Secretary/Asst. to the Judge	Yes	All
County Sheriff	Yes	All
Police Chiefs	Yes	All
Each Constable	Yes	All
Fire Chiefs/Fire Marshals	Yes	All
Community Supervision	Yes	All
County Health Officer	Yes	All
Finance Directors/Tax Assessor	Yes	All
City Public Works Directors/County Engineer	Yes	All
Public Utilities Directors	Yes	All
Human Resources Directors	Yes	All
County/City Attorneys	Yes	All
Justices of the Peace	Yes	All
RACES Group	Yes	All
St Joseph's Hospital – Bryan & College Station	Yes	All
The Physician's Center	Yes	All
Baylor Scott & White	YES	All
County/City Animal Control	Yes	All
ISD Transportation Directors	Yes	All
Independent School Districts	Yes	All
Brazos County L.E.P.C.	Yes	All
American Red Cross	Yes	All
The Salvation Army	Yes	All
Victim Relief Ministries	Yes	All
Brazos Valley Transit Authority	Yes	All
TDEM District Chief	Yes	All
D.P.S. Captain, Bryan	Yes	All
Brazos Valley V.O.A.D.	Yes	All

ATTACHMENT 2 REFERENCES

1. Texas Department of Public Safety, Texas Division of Emergency Management, *Texas Statue Chapter 418. Emergency Management.*
2. Current FEMA Public Assistance Program Policy Guide
3. Current FEMA Local Mitigation Planning Policy Guide.
4. FEMA, Independent Study Course, IS-288: *The Role of Voluntary Organizations in Emergency Management*
5. FEMA, *Comprehensive Preparedness Guide (CPG-101)*
6. U. S. Department of Homeland Security, *National Response Framework*
7. 79th Texas Legislature, *House Bill 3111*



ATTACHMENT 4 EMERGENCY MANAGEMENT FUNCTIONAL RESPONSIBILITIES
--

	Warning	Communications	Shelter & Mass Care	Radiological Protection	Evacuation	Firefighting	Law Enforcement	Health & Medical	Public Information	Recovery	Public Works & Engineering	Utilities	Resource Management	Direction & Control	Human Services	Hazard Mitigation	Hazmat & Oil Spill Response	Search & Rescue	Transportation	Donations Management	Legal	Terrorist Incident Response
Co. Judge/Mayor/Univ Exec	S	S	S	S	S	S	S	S	P	S	S	S	S	P	S	S	S	S	S	S	S	S
Asst. to County Judge/City Manager/Asst. VP Safety Security									S	S			S							S		
EMC	S	C	P	C	S	C	C	C	C	P	C	C	P	C	P	P	C	C	P	S	C	C
Law Enforcement	P	P	S	S	P	S	P						S	S	S		S	S		S		P
Fire Service	S	S	S	P	S	P							S	S		S	P	P		S		S
Public Works/Univ. Facilities		S	S	S	S		S			S	P	S	S	S		S	S	S				S
Utilities		S								S		P	S	S		S	S			S		S
Health & Medical Services			S	S	S			P					S	S	S		S	S	S	S		S
Human Services			S		S								S		S	S				S		S
Community Services			S	S	S								S	S	S					S		S
Human Resources													S							S		
Tax Assessor/Finance Dir.										S			S			S				S		
Transportation/ISD			S		S								S		S		S		S			S
City/County Attorney's Office/TAMUS OGC					S								S			S				S	P	S
Search & Rescue					S									S				S				S
Salvation Army			S																	P		
American Red Cross			S																			

P – INDICATES PRIMARY RESPONSIBILITY
 S – INDICATES SUPPORT RESPONSIBILITY
 C – INDICATES COORDINATION RESPONSIBILITY

<p align="center">ATTACHMENT 5 ANNEX ASSIGNMENTS</p>
--

ANNEX	ASSIGNED TO:
Annex A: Warning	Police Chiefs/County Sheriff
Annex B: Communications	Police Chiefs/County Sheriff
Annex C: Shelter & Mass Care	American Red Cross/EMCs
Annex D: Radiological Protection	Fire Chiefs
Annex E: Evacuation	Police Chiefs/County Sheriff
Annex F: Firefighting	Fire Chiefs/Fire Marshal
Annex G: Law Enforcement	Police Chiefs/County Sheriff
Annex H: Health and Medical Services	County Health Authority
Annex I: Public Information	CEOs/PIOs
Annex J: Recovery	EMCs
Annex K: Public Works & Engineering	Public Works Directors/County Engineer
Annex L: Utilities	Public Utilities Directors
Annex M: Resource Management	EMCs
Annex N: Direction & Control	CEOs/EMCs
Annex O: Human Services	EMCs
Annex P: Hazard Mitigation	EMCs
Annex Q: Haz-Mat & Oil Spill Response	Fire Chiefs
Annex R: Search & Rescue	Fire Chiefs
Annex S: Transportation	EMCs
Annex T: Donations Management	The Salvation Army
Annex U: Legal	City/County Attorneys
Annex V: Terrorist Incident Response	Police Chiefs/County Sheriff

<p style="text-align: center;">ATTACHMENT 6 SUMMARY OF AGREEMENTS & CONTRACTS</p>

Agreements

Brazos County and the cities within Brazos County have Mutual Aid Agreements in place with all jurisdictions in our 7-county region (Brazos Valley Region).

Contracts

Brazos County has no pre-positioned contracts for emergency management activities but has numerous vendor agreements through our Purchasing Department that will be used as needed during any disaster/event.

<p style="text-align: center;">ATTACHMENT 7 NATIONAL INCIDENT MANAGEMENT SYSTEM (NIMS) SUMMARY</p>
--

A. BACKGROUND

1. NIMS is a comprehensive, national approach to incident management that is applicable to all jurisdictional levels and across functional disciplines. This system is suitable across a wide range of incidents and hazard scenarios, regardless of size or complexity. It provides a flexible framework for all phases of incident management, as well as requirements for processes, procedures, and systems designed to improve interoperability.
2. NIMS is a multifaceted system that provides a national framework for preparing for, preventing, responding to, and recovering from domestic incidents.

B. COMPONENTS

1. Command and Management. The incident management structures employed by NIMS can be used to manage emergency incidents or non-emergency events such as celebrations. The system works equally well for small incidents and large-scale emergency situations. The system has built-in flexibility to grow or shrink depending on current needs. It is a standardized system, so personnel from a variety of agencies and geographic locations can be rapidly incorporated into a common management structure.
 - a. Incident Management System. A system that can be used to manage emergency incidents or non-emergency events such as celebrations.

1) FEATURES OF ICS

ICS has a number of features that work together to make it a real management system. Among the primary attributes of ICS are:

- a) **Common Terminology.** ICS requires the use of common terminology, such as the use of standard titles for facilities and positions within an organization, to ensure efficient and clear communications.
- b) **Organizational Resources.** All resources including personnel, facilities, major equipment, and supply items used to support incident management activities must be “typed” with respect to capability. This typing will minimize confusion and enhance interoperability.
- c) **Manageable Span of Control.** Span of control should ideally vary from three to seven. Anything less or more requires expansion or consolidation of the organization.
- d) **Organizational Facilities.** Common terminology is used to define incident facilities, the activities conducted at these facilities, and the organizational positions that can be found working there.

- e) Use of Position Titles. All ICS positions have distinct titles.
- f) Reliance on an Incident Action Plan. The incident action plan, which may be verbal or written, is intended to provide supervisory personnel with a common understanding of the situation and direction for future action. The plan includes a statement of objectives, organizational description, assignments, and support material such as maps. Written plans are desirable when two or more jurisdictions are involved, when state and/or federal agencies are assisting local response personnel, or when there has been significant turnover in the incident staff.
- g) Integrated Communications. Integrated communications include interfacing disparate communications as effectively as possible, planning for the use of all available systems and frequencies, and requiring the use of clear text in communications.
- h) Accountability. ICS is based on an orderly chain of command, check-in for all responders, and only one supervisor for each responder.

2) UNIFIED COMMAND

- a) Unified Command is a variant of ICS used when there is more than one agency or jurisdiction with responsibility for the incident or when personnel and equipment from a number of different agencies or jurisdictions are responding to it. This might occur when the incident site crosses jurisdictional boundaries or when an emergency situation involves matters for which state and/or federal agencies have regulatory responsibility or legal requirements.
- b) ICS Unified Command is intended to integrate the efforts of multiple agencies and jurisdictions. The major change from a normal ICS structure is at the top. In a Unified command, senior representatives of each agency or jurisdiction responding to the incident collectively agree on objectives, priorities, and an overall strategy or strategies to accomplish objectives; approve a coordinated Incident Action Plan; and designate an Operations Section Chief. The Operations Section Chief is responsible for managing available resources to achieve objectives. Agency and jurisdictional resources remain under the administrative control of their agencies or jurisdictions but respond to mission assignments and direction provided by the Operations Section Chief based on the requirements of the Incident Action Plan.

3) AREA COMMAND

- a) An Area Command is intended for situations where there are multiple incidents that are each being managed by an ICS organization or to oversee the management of large or multiple incidents to which several Incident Management Teams have been assigned. Area Command becomes Unified Area Command when incidents are multijurisdictional.
- b) The organization of an Area Command is different from a Unified Command in that there is no operations section, since all operations are conducted on-scene, at the separate ICPs.

- 4) Multiagency Coordination Systems. Multiagency coordination systems may be required for incidents that require higher level resource management or information management. The components of multiagency coordination systems include facilities, equipment, EOCs, specific multiagency coordination entities, personnel, procedures, and communications; all of which are integrated into a common framework for coordinating and supporting incident management.
- 5) Incident Complex. Incident Complex are two or more distinct incidents in the same general area that, by management action, are managed under a single incident commander or unified command in order to improve efficiency and simplify incident management processes.
- 6) Public Information. The NIMS system fully integrates the ICS Joint Information System (JIS) and the Joint Information Center (JIC). The JIC is a physical location where public information staff involved in incident management activities can co-locate to perform critical emergency information, crisis communications, and public affairs functions. More information on JICs can be obtained in the DHS *National Incident Management System Plan*, dated March 2004.
- 7) Preparedness. Preparedness activities include planning, training, and exercises as well as certification of response personnel, and equipment acquisition and certification. Activities would also include the creation of mutual aid agreements and Emergency Management Assistance Compacts. Any public information activities such as publication management would also be preparedness activities.
- 8) Resource Management. All resources, such as equipment and personnel, must be identified and typed. Systems for describing, inventorying, requesting, and tracking resources must also be established.
- 9) Communications and Information Management. Adherence to NIMS specified standards by all agencies ensures interoperability and compatibility in communications and information management.
- 10) Supporting Technologies. This would include any technologies that enhance the capabilities essential to implementing the NIMS. For instance, voice and data communication systems, resource tracking systems, or data display systems.
- 11) Ongoing Management and Maintenance. The NIMS Integration Center provides strategic direction and oversight in support of routine review and continual refinement of both the system and its components over the long term.

State Planning Standards Checklist for the Basic Plan

Brazos County, Cities of Bryan, College Station, Kurten, Wixon Valley and Texas A&M University

Jurisdiction(s): _____

Plan Date: 2024-2029

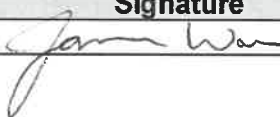
Date of most recent change, if any: 09/10/2024

(The date that appears on the signature page)

Note: The Basic Plan will be considered Deficient if the *italicized* standards are not met.

This Basic Plan shall:	Section/paragraph
PLAN FORMAT	
BP-1. <i>Include an Approval & Implementation Page signed by the chief elected official(s) of the jurisdiction(s) party to the plan.</i>	i
BP-2. <i>Include a Record of Changes.</i>	ii
BP-3. <i>Include a Table of Contents.</i>	iii
I. AUTHORITY	
BP-4. Identify local, state, and federal legal authorities that establish the legal basis for planning and carrying out emergency responsibilities.	I.
II. PURPOSE	
BP-5. Include a purpose statement that describes the reason for development of the plan and its annexes and identifies who the plan applies to.	II.
III. EXPLANATION OF TERMS	
BP-6. Explain and/or define terms, acronyms, and abbreviations used in the document.	III.
IV. SITUATION & ASSUMPTIONS	
BP-7. <i>Include a situation statement that summarizes the potential hazards facing the jurisdiction(s), including likelihood of occurrence and estimated impact on public health and safety, and property.</i>	IV.A & Figure 1
BP-8. <i>Include a list of planning assumptions on which the plan and its annexes are based.</i>	IV.B
V. CONCEPT OF OPERATIONS	
BP-9. Describe the jurisdiction's overall approach to emergency management.	V.A – C
BP-10. <i>Include a statement acknowledging the adoption of the National Incident Management System (NIMS).</i>	V.B.8
BP-11. <i>Describe its incident command arrangements and the interface between field operations and the Emergency Operating Center..</i>	V.D - E
BP-12. Outline the process that will be used to obtain state or federal assistance.	V.F
BP-13. Summarize emergency authorities of local officials.	V.G
BP-14. List actions to be taken by local officials during various phases of emergency management.	V.H
VI. ORGANIZATION & ASSIGNMENT OF RESPONSIBILITIES	
BP-15. Describe the local emergency organization.	VI.A
BP-16. Describe the emergency responsibilities of the chief elected official and other members of the executive staff.	VI.B.3
BP-17. Describe the common emergency management responsibilities of all government departments and agencies.	VI.B.4
BP-18. Outline responsibilities for various emergency service functions, summarize the tasks involved, and indicate by title or position who has primary responsibility for each function.	VI.B.5

BP-19. Outline responsibilities for various emergency support functions, summarize the tasks involved, and indicate by title or position who has <u>primary responsibility</u> for each function.	VI.B.6
BP-20. Outline the emergency services that organized volunteer groups and businesses have agreed to provide.	VI.B.7
VII. DIRECTION & CONTROL	
BP-21. Indicate by title or position who is responsible for providing guidance for the emergency management program and directing and controlling emergency response and recovery activities.	VII.A
BP-22. Describe local emergency facilities and summarize the functions performed by each.	VII.B
BP-23. Summarize the line of succession for key personnel.	VII.C
VIII. READINESS LEVELS	
BP-24. Explain readiness levels, indicate who determines them, and describe general actions to be taken at various readiness levels.	VIII
IX. ADMINISTRATION & SUPPORT	
BP-25. Outline policies on agreements & contracts and refer to summary of current emergency service agreements and contracts in appendices.	IX.A
BP-26. Establish requirements for reports required during emergency operations.	IX.B
BP-27. Outline requirements for record-keeping related to emergencies and for preservation of government records.	IX.C
BP-28. Describe the policies on training for personnel to ensure compliance with NIMS requirements.	IX.D
BP-29. Establish requirements for a post-event review of emergency operations following major emergencies and disasters.	IX.F
X. DEVELOPMENT & MAINTENANCE	
BP-30. Identify who is responsible for approving and promulgating the plan and indicate how it will be distributed.	X.A & B
BP-31. Outline the process and schedule for review and update the plan and its annexes.	X.C & D
ATTACHMENTS	
BP-32. Include a Distribution List for the plan and its annexes.	Attachment 1
BP-33. Include a list of references pertinent to the plan.	Attachment 2
BP-34. Include a graphic depicting the local emergency organization.	Attachment 3
BP-35. Include a graphic depicting emergency management functional responsibilities.	Attachment 4
BP-36. Include a summary of assignments for developing and maintaining the annexes to the plan.	Attachment 5
BP-37. Include a summary of emergency-related agreements and contracts.	Attachment 6
BP-38. Include a summary of the Incident Command System.	Attachment 7

FOR LOCAL GOVERNMENT USE		Signature	Date
This Checklist Completed By:			9/18/24